

## Step 1 Install Panel & Loop Module:

The Control Panel and Loop Module require installation into their proposed locations. See Fusion Loop Module Installation Guide for more information.

Once the Control Panel and Loop Module are installed and power is applied, the Loop Module will show the following default screen:

**DEV00 AL00 FT00**

Where:

DEV00 shows the total number of devices on the system between 00-31.

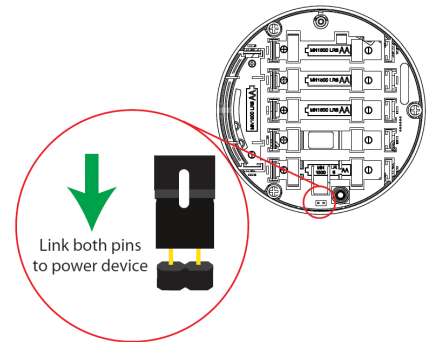
AL00 shows the amount of devices currently with outstanding Alarms and Pre-alarms ranging between 00-31.

FT00 shows the amount of devices currently with outstanding Faults ranging between 00-31.

Note: As default, the Loop Module will be set to device address 001. This can be changed if required. For further details download the Fusion Loop Module Engineers Guide from [www.emsgroup.co.uk/info-zone](http://www.emsgroup.co.uk/info-zone) Instant access to a wide range of product manuals and software will be granted upon registration.

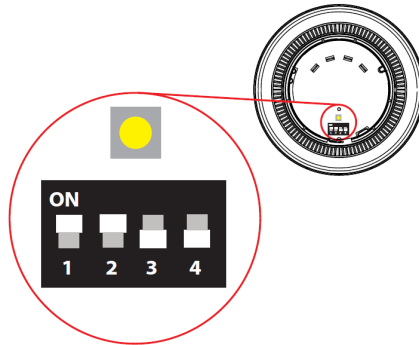
## Step 2 Power Up the Devices:

Detectors, Sounders, Callpoints and Input/Output Units have power jumpers as shown:



Combined Sounder Detectors are powered by changing the orientation of Switch 1 as shown:

Switch 1 on = POWER ON



## Step 3 Add & Install Devices:

To log on the devices; the Loop Module must be in the correct operating menu and then the device log on button pressed until the red confirmation led lights next to the button (Note on the call point the alarm led is utilised for this feature).

From Front display **Add New Device** screen displays **Press Dev Log On** followed by **Add Dev 03456 Y?** select required address **Detector Added**. Back to exit.

The device now requires installation to its location. (See relevant device's installation for more information).

## Step 4 Add devices to Control Panel:

The devices will now require adding to the connected Control Panel ensuring consistency of device addresses with the Loop Module. Note: Combined Sounder/Detectors will hold two loop addresses. (The first for its Sounder and the next for its Detector).

## Step 5 Checking Device Signal Levels:

Devices signal levels can be found in the Signal Level Menu:

From Front display **Device Status** select desired signal Level

This menu when entered shows information on the two signalling channels used by the loop module. The signal levels shown range from 100 - 0 with 100 being the highest signal to 0 where no signal is being seen, as shown below;

100	Shown indicates Good Signal Level
90	Shown indicates Good Signal Level
80	Shown indicates Good Signal Level
70	Shown indicates Good Signal Level
60	Shown indicates Good Signal Level
50	Shown indicates Good Signal Level
40	Shown indicates Medium Signal Level
30	Shown indicates Low Signal Level
20	Shown indicates Caution Signal Level
10	Shown indicates Caution Signal Level
0	Shown indicates No Signal Level Received

Back to exit.

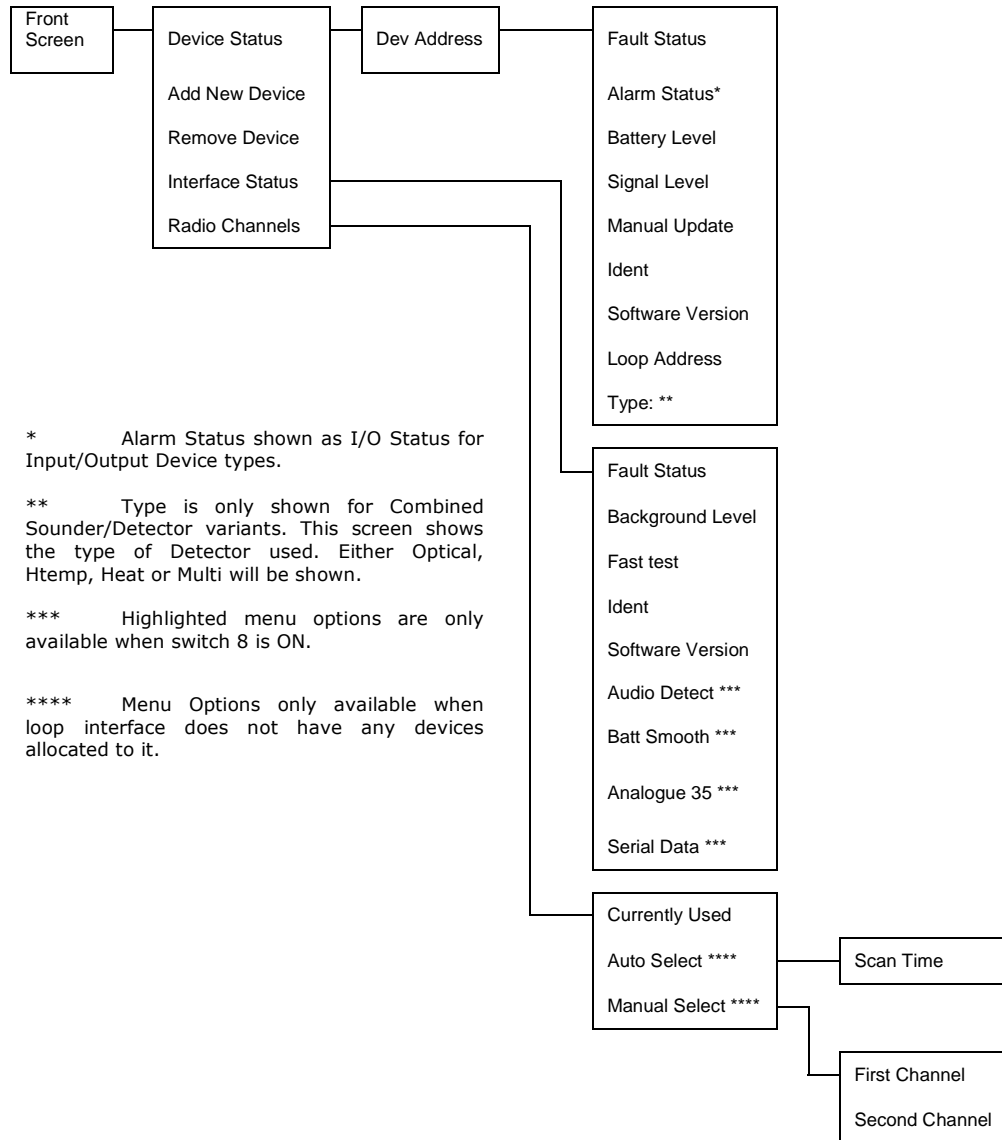
## Step 6 Test Devices:

The system can now be tested to ensure correct operation.

## Analogue Values:

Analogue Value	Radio Device Type	Symptom
0	All Device Types	Battery missing from either pack 1 or 2.
1	Detector	Detector head fault.
1	Sounder	No Audio output from sounder.
2	Detector	Detector head missing.
3	Sounder	Sounder head missing.
4	All Device Types	In Tamper condition.
4	Input/Output	Input Open or Short circuit.
4	Loop Interface	Aerial Tamper (Note: Only applicable with external high gain aerials).
7	All Device Types	Batteries low from either pack 1 or 2. Replacements required within 30 days.
13	All Device Types	Radio Signal strength caution.
14	All Device Types	Radio Signal strength low.
16	Callpoint, Sounder & I/O	Radio Signal strength good or medium.
20	Detector	Radio Signal strength medium.
25	Detector	Radio Signal strength good.
35	Detector	Detector head dirty.
50	Pre-Alarm	Detector in pre-alarm condition.
64	Callpoint	Callpoint in alarm condition.
85	Alarm	Detector in alarm condition.

# Menu Structure:



# FUSION

## Loop module



## QUICK START GUIDE



EMS Group Head Office  
Technology House  
Sea Street  
Herne Bay  
Kent CT6 8JZ  
United Kingdom  
t: +44 (0) 1227 369570  
f: +44 (0) 1227 369679  
e: enquiries@emsgroup.co.uk  
www.emsgroup.co.uk



FOLLOW US ON  
twitter  
@emstechnical



ISO 9001  
ISO 14001  
Approved Company



The information contained within this literature is correct at time of publishing. The EMS Group reserves the right to change any information regarding products as part of its continual development enhancing new technology and reliability. The EMS Group advises that any product literature issue numbers are checked with its head office prior to any formal specification being written.



Fusion Loop Module Quick Start Guide Issue 2 (TSD019)  
www.emsgroup.co.uk

